

Working at Halliford



Halliford
School
SHEPPERTON

'Excellent in all areas'

ISI December 2022



Contents

Welcome from the Headmaster 3

About the School 4

- Our Vision
- Our Aims
- Mission Statement
- Values
- ISI Report
- IT Strategy
- The Pastoral Structure
- Location

Employee Benefits 8

Application Process 9

How to find us 12

4.9

How does climate vary across the world?

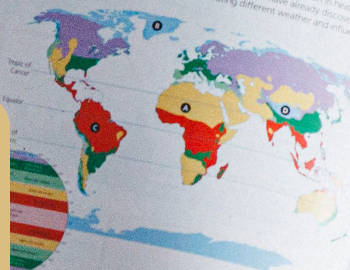
Learning objectives

- To know climate distribution around the world.
- To identify reasons for variation in climate.

Climate zones

The world can be divided into different climate zones. These zones are based on the work of Vladimir Köppen, a climatologist from Germany. Köppen's climate zone has its own distinctive pattern of temperature and rainfall. A simplified version of this is shown in Diagram A. These climate zones are due to a range of factors, in particular because the Sun heats the Earth more strongly than polar areas. This variation in heat leads to the circulation of air in the atmosphere. As you have already discovered, air circulates around the Earth creating different weather and influencing climate.

A Climate zones



Altitude

Altitude is a measure of the land's height above sea level. Temperature decreases by about 1°C for every 100 m increase in height above sea level. This is because at higher altitudes the heat it receives from the ground and the sun is less dense so it is less able to retain it. The heat it receives from the ground and the sun is less dense so it is less able to retain it. The heat it receives from the ground and the sun is less dense so it is less able to retain it.

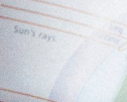
Prevailing winds

The prevailing wind is the direction from which the wind usually blows. For most of Europe this is from the south-west. The prevailing wind is from the south-west. The prevailing wind is from the south-west. The prevailing wind is from the south-west.

Effecting climate

Factors that create climate zones are... At the Equator, the sun's rays are directly at a small angle, so the heat is spread over a large area. At the poles, the sun's rays are at a steep angle, so the heat is concentrated over a small area.

Polar and equatorial rays



Distance from the sea

Land and sea heat up at different rates. Land is warmer than the sea, which is solid. It is longer to warm up than the land. It also cools down more slowly than the land. The further away from the sea a place is, the more its temperature is affected by the sea. So it heats quickly, but also loses the heat quickly.

Activities

- 1 Look carefully at Map A. a) Compare this map with a physical map of the world in an atlas. Name regions A, B, C and D. b) Use Map A for the simplified model to describe the climate at the locations A-D. c) It is a lot colder at B than A. Give a reason for this. d) It is a lot colder at D than A. Give a reason for this.
- 2 Using Diagram B explain how altitude affects climate.
- 3 Using Diagram C explain why it is colder in the world's climate patterns.
- 4 Using Diagram D explain how prevailing winds affect climate. a) What is a prevailing wind? b) Explain how the North Atlantic Drift affects temperatures in the UK and Europe. c) Read your descriptions of Britain's climate. d) Compare Atlas C-E from the last lesson. e) Read your descriptions of Britain's climate. f) Use them to explain the effect climate has on the factors that affect climate. g) Use them to explain the effect climate has on the factors that affect climate. h) Use them to explain the effect climate has on the factors that affect climate.

Welcome from the Headmaster

Thank you for the interest you have shown in Halliford School. I welcome you to our wonderful school and I hope that what you will read on the following pages and our website will encourage you to come and see for yourself what a magnificent place Halliford School is to be a part of.

As the Headmaster, I am working with the students and staff here to create a school where we strive for excellence in all that we do. My job, along with my colleagues on the senior leadership team, is to support and empower our dedicated staff members as they strive to provide an education that enables each of our students to become the very best version of themselves that they can possibly be. In appointing new staff, we seek to find exceptional talent and work with our staff to foster a culture of energy and vitality for learning, where possibilities for our students are endless.

Halliford School achieved the highest possible rating in its most recent ISI inspection in December 2022, receiving an “excellent” rating for both academic achievement and pupil personal development. This is a very exciting time to join the school, as we are committed to building on these successes and taking Halliford School to the next stage of its development.

We recognise that every child is unique and that the key to reaching their true potential lies in an education that is as full as it is diverse. Our approach to striving for academic excellence is perfectly complemented by our commitment to helping students develop a wide range of interests, build their aspirations, and become confident and resilient individuals prepared for the future. We offer small class sizes, which enable personalised teaching and learning strategies suitable for our boys and girls.

We also recognise that the environment in which a child learns is just as important as what they learn. Renowned for our outstanding pastoral care, we work hard to create a community where our students and staff can come together, where they are encouraged to flourish, where they can feel safe and comfortable, confident and proud, stimulated and inspired and, most of all, happy.

The staff room at Halliford is welcoming and supportive of new colleagues with our culture founded on the principle of mutual respect. We are a busy school, and our staff offer a great number of opportunities to the students. We seek to offer our staff rich opportunities for personal and professional development and training.

I warmly invite you to consider joining us to be a part of this wonderful school on our exciting journey and I look forward to hopefully inviting you to interview. Good luck!



Mr J Davies
Headmaster



About the School

Halliford School teaches boys in Years 7 – Upper 6th and, since 2007, has taken girls into sixth form. There are currently around 460 students on roll. In November 2014, the school was accepted into membership of HMC. The school has seen expansion since September 2018 and has an impressive array of facilities, including a dedicated theatre, classroom block, technology building, multi-purpose sports hall, gymnasium and sports pitches, both at school and on a nearby separate site. Our Philip Cottam Centre houses Music, Art, Sixth Form Centre and Café, along with recently refurbished kitchens and dining room. The Woodward Building, opened in 2021, contains an impressive Learning Resource Centre and six spacious classrooms.

We are proud of many excellent results achieved by our students and see some magnificent University destinations for our Upper Sixth students, including Oxbridge. Applications for places to join the School are incredibly strong and in September 2023 the School opened with waiting lists in all year groups.

Our Vision

To be acknowledged as the small independent school of choice for 11-18 year olds, where we are proud to belong to a thriving, happy and aspirational community that is committed to each student as an individual.

Our Aims

- To provide a stimulating learning environment for boys 11-18 and girls 16-18 where we promote academic excellence and provide opportunities to realise the full potential of every individual to become the best version of themselves.
- To provide a warm-hearted family ethos in which every student is known and valued as an individual.
- To enable each individual to discover and develop his / her talents, character, creativity, resilience and ability to work within a team by providing a balanced and wide-ranging co-curricular programme.
- To create an environment in which all members of the school community feel supported and valued and able to contribute positively to the lives of others by providing a framework of outstanding pastoral care.
- To equip our students for the world they will encounter beyond Halliford School.



"I am grateful to work in a school with a strong community feel between staff, students, and parents. The staff at Halliford School are supportive and work collaboratively to ensure the best outcomes for our students."

Miss Foster, Teacher of Chemistry & Head of Year 7

Mission Statement

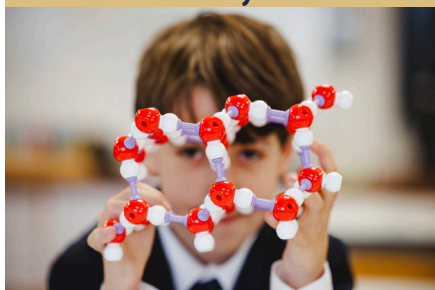
Halliford is a school based on strong family values where we know and respect every student as an individual. We encourage and support Hallifordians to flourish and become the best version of themselves that they can possibly be.

We aim for excellence by being academically ambitious but at the same time academically sensitive.

We inspire Hallifordians within a community that is founded on high quality teaching and learning, outstanding pastoral care and first class sporting, cultural and co-curricular opportunities.

Values

Intellectually Curious



Respectful



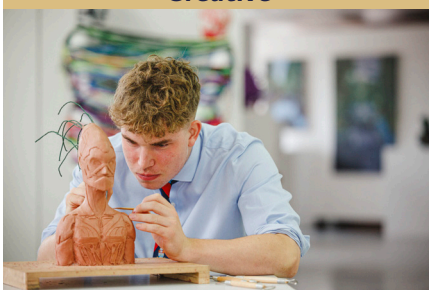
Warm-Hearted



Team Players



Creative



Resilient



ISI Report - December 2022

“Pupils develop excellent self-confidence and a high degree of self-awareness as they move up the school. Year 7 pupils spoke joyfully about how they have quickly settled in and already feel valued members of the school community.”

“Pupils of all ages display excellent levels of knowledge, skills and understanding in a wide range of subjects. Pupils have a deep understanding of subject-specific techniques in many subjects.”

“Data provided by the school indicate that in public examinations, pupils attain examination grades at least in line with and often beyond the level expected for their ability, indicating strong progress from their starting points.”

IT Strategy

Halliford School invests in the latest teaching and learning resources. The school's 1:1 Microsoft Go Device programme offers students and staff the best collaborative tools to work. All staff are provided with their own MS Go, and departments are supported in developing their resources to make the most of this innovative technology.

The Pastoral Structure

Our students are designated a House that will act as both pastoral support and also a community throughout their time at the School. Houses have a tutor in each year group and a Head of House. The four Heads of House are responsible for a team of tutors in Years 8 – 11 who manage their tutees' day-to-day pastoral and academic lives. All full-time staff members are tutors within this structure, and full training and support are given. behind the tall-storied Georgian House set back from Russell Road.



“Halliford School boasts an extensive array of co-curricular opportunities, with a remarkable highlight being the annual ski trip that accommodates over a hundred students - an undertaking few schools would consider. The key to these extraordinary experiences lies in our exceptional students, who embrace and personify our core values. Working with them and guiding them on such trips is a genuine delight. Halliford is a vibrant community that presents numerous chances for students to explore new interests, cultivate their abilities, and benefit from a strong support network. This nurturing environment encourages students to aim high and take pride in their accomplishments, allowing us as educators to share in their exhilarating journey towards success. Every day, amazing things happen at Halliford School.”

Mr Slocock, Assistant Head Co-Curricular



Location

Halliford School is situated in Shepperton, in a beautiful setting alongside the banks of the River Thames. The school was founded in 1921 as an independent grammar school on the present site. The School stretches out over six acres behind the tall-storied Georgian House set back from Russell Road.

The School works hard to support local businesses and is proud to source the vast majority of our food and provisions from local businesses. There are many local restaurants and riverside walks and thriving sports clubs and cultural opportunities on offer. The boroughs of Spelthorne, Kingston, Staines and Richmond-upon-Thames offer a vast array of accommodation options ideal for young people and those with a family.

The village is the final stop on a branch line from London Waterloo with services stopping at Vauxhall, Clapham Junction, Wimbledon, Kingston, Teddington, Hampton and Sunbury. The journey time to London is 50 minutes. There is a faster route to London Waterloo from nearby Walton-on-Thames with fast trains taking 25 minutes.

The School operates a shuttle bus along with other local services buses to Walton-on-Thames. The M3 and M25 are a few minutes' drive from the School.



"I am fortunate to belong to a well-established Science Department. My colleagues are incredible and have been immensely supportive over the years. The school has provided plenty of opportunities for my personal career development and support when needed. As for my colleagues across the school, you could not meet a nicer bunch!"

Dr Brooks, Head of Biology

Employee Benefits



Salary

Competitive salary, well above the maintained sector



School Fee Reduction

Children of staff at Halliford School may, subject to passing the entrance examination, be eligible for a 50% remission on fees at the discretion of the Governing Body. This is prorated according to working days.



Meals and Refreshments

All staff are entitled to eat free of charge during term time, and delicious home-cooked meals are served at lunchtime. In addition, hot drinks and biscuits are provided daily in the staff common room, with cakes on special occasions. Speciality tea and coffee are available daily from the Sixth Form Cafe.



Professional Development and Postgraduate Study

Staff are encouraged and supported to undertake a wide variety of professional development opportunities both within and beyond the school, including the ISQAM programme. Those wishing to undertake professional qualifications may seek financial support from the Governing Body.



Sports Facilities and Classes

Staff members are permitted to use the school gym and fitness facilities subject to approval from the Director of Sport. Weekly yoga class for staff after school.



Staff Pension

Membership of TPS for all staff as well as a DC Scheme with extensive optional benefits.



Private Parking

Free on-site parking is available to all staff, subject to availability. Subject to approval, staff can use their private vehicles for school journeys during school hours covered by the school's insurance, and staff can claim suitable mileage.



Travel and Visits

We encourage and support staff to organise trips for our students, which provide invaluable opportunities to travel and visit new countries.



18 weeks holiday (including Bank Holidays)



Provision of a Microsoft Surface Go



Cycle-to-work scheme with cyclescheme.co.uk



Personal accident insurance through the school insurers



Staff Socials



Staff wellbeing support



24-hour counselling helpline service



Opportunities to join worldwide educational trips



Enhanced Sickness Pay



“One of the things that I appreciate most about Halliford School is the opportunity to grow as a teacher. The school provides regular and constructive feedback, professional development, and mentoring for the staff. I am proud to be a part of the Halliford community, and I highly recommend it to anyone looking for a stimulating, rewarding, and fulfilling teaching career.”

Mrs Makkar, Teacher of Business Studies

Application Process

General

We are proactively committed to creating a diverse staff body which reflects the community that we teach. At Halliford School we value diversity and inclusion; we want to attract the best people for the role available. This is regardless of age, ethnicity, sexual orientation, gender, disability, socioeconomic status or religious beliefs.

Halliford School is committed to safeguarding and promoting the welfare of children and young people. We expect all staff, volunteers and visitors to share our commitment. We are an equal opportunities employer and the successful candidate will be subject to enhanced DBS disclosure and employment reference checks. You must be eligible to work in the UK.



“As an Early Career Teacher at Halliford School in Shepperton, I can confidently say that my experience here has been nothing short of life changing. From the moment I stepped onto the picturesque school grounds, I was greeted by a sense of warmth and belonging that immediately made me feel at home. My time at Halliford School has been transformative, both personally and professionally. It is a place where I have grown as an educator, formed lifelong friendships, and felt truly valued as a member of the school community. I am grateful for the opportunity to be a part of such a wonderful institution and look forward to continuing to contribute to its legacy of excellence.”

Mr Hoare, Teacher of English

Application Form

Halliford School uses an application form to apply, which can be downloaded from the job listing at www.hallifordschool.co.uk/vacancies. Please apply as soon as possible as applications will be considered upon receipt; we reserve the right to interview/appoint before the closing date.

Within the application form, there is the opportunity to demonstrate, using examples, your suitability for the role and the qualities you would bring to Halliford School.

If you have changed your name by deed poll or any other mechanism (e.g. marriage, adoption, statutory declaration) you will be asked to provide documentary evidence of the change.

Email the completed form, along with a covering letter, addressed to the Headmaster, Mr James Davies to hr@hallifordschool.co.uk

All applications will be acknowledged by email.



“Teaching in a school where staff, parents, and students extend such support and care to one another is genuinely heart-warming. Being part of the Halliford family has allowed me to grow both professionally and personally, and I am grateful for the opportunity to contribute to this exceptional community.”

Mr Watson, Head of Design and Technology



“I am happy that I began my teaching career as an ECT at Halliford. The support and guidance I received as a new teacher has been great. The mentorship programme provided me with invaluable advice and encouragement, helping me navigate the challenges and opportunities of teaching History and Geography at Halliford.”

Miss Head, Teacher of Humanities

Invitation to Interview

Our interviews are held at the School. Candidates with a disability who are invited to interview should inform the School of any necessary reasonable adjustments or arrangements to assist them in attending the interview.

If you are shortlisted and invited for interview, we will ask you to bring in evidence of the following;

1. Identity: passport or photocard driving licence
2. Address: document from the DBS List of Valid Identity Documents with current address
3. Proof to work in the UK: passport or UK birth certificate
4. Qualifications: original documents confirming any educational and professional qualifications.

References

Offers of employment are subject to the receipt of a minimum of two references which are satisfactory to the School. Please refer to our Recruitment Selection and Disclosure Policy which can be found on the school website here.

Information

If you have any queries at all about the recruitment process please contact Zoe Fazackerley, HR Officer on **01932 234 920** or **zoe.fazackerley@hallifordschool.co.uk**

"I have had the pleasure of working at Halliford for twelve years, and I consider it a privilege to work here. I have seen many exciting changes during that time, but the one constant throughout has been the ethos, driven by staff and students alike. Everyone understands what a special community Halliford is, so they are all determined to uphold the key values. Our students are proud to be called Hallifordians and understand the opportunities they have here to reach their full potential. The school has always supported my personal career development. I started as a classroom teacher, became a Head of House and Head of Department, and now I am Director of Student Welfare." **Mr Shales, Director of Student Welfare**



How to find us



Halliford
School
SHEPPERTON

Independent Senior Day School
Boys 11–18 years • Girls 16–18 years

Halliford School
Russell Road
Shepperton
TW17 9HX

Tel: 01932 223593



Leading
Independent
Schools



www.hallifordschool.co.uk



Come as you are. Go as all you can be.